

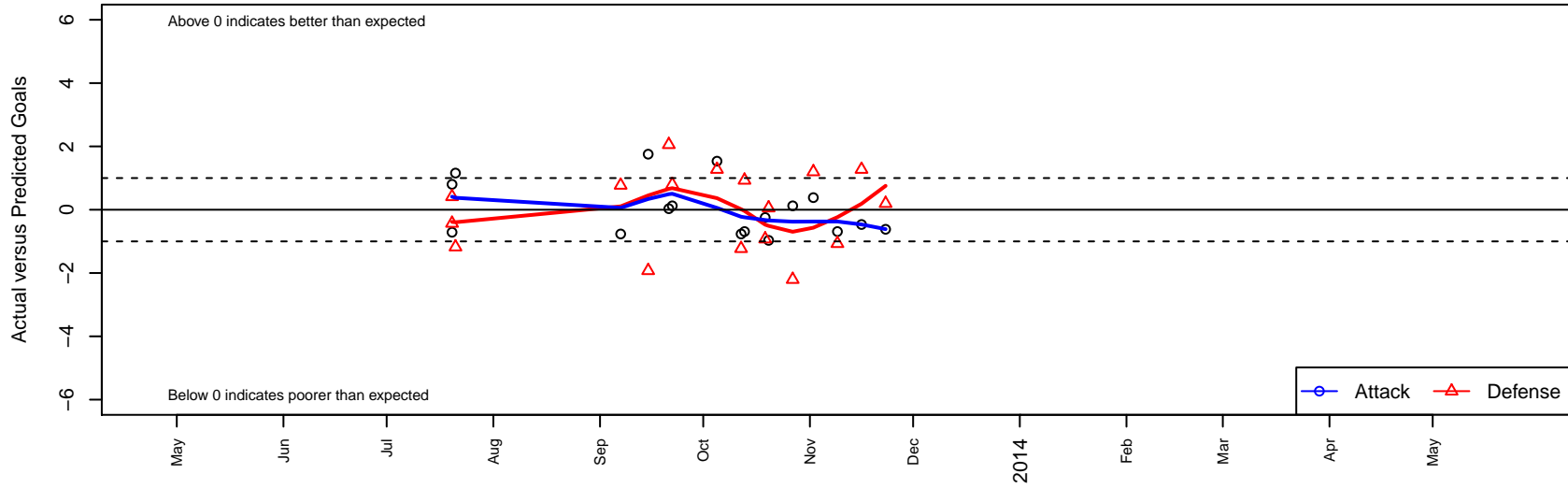
Milan SC Black G00

, CAS
 G00 total strength=1339
 attack=7.38 defense=5.69
 fall league = CSL Gold U13
 alt names used:
 MILAN SC BLACK (CAS)
 MILAN BLACK

Venues played:
 Pats Cup GU13 Mercurial U13
 CSL Gold U13



Milan SC Black G00
 Dots are actual minus expected GF (blue circles) and GA (red triangles).
 Blue line is smoothed change in attack strength. Red is smoothed change in defense strength.



	date	home		away		venue	pred.home	pred.away
10869	2013-11-23	Oxnard Wave Gold G00	1	Milan SC Black G00	2	CSL Gold U13	1.20	2.62
10759	2013-11-16	California SA Cypress Black G00	1	Milan SC Black G00	0	CSL Gold U13	2.27	0.47
10657	2013-11-09	Milan SC Black G00	0	Eagles SC G00	4	CSL Gold U13	0.69	2.93
10509	2013-11-02	Milan SC Black G00	3	Oxnard Wave Gold G00	0	CSL Gold U13	2.62	1.20
10455	2013-10-27	Xolos USA TEM G00	4	Milan SC Black G00	1	CSL Gold U13	1.80	0.88
10310	2013-10-20	FC Golden State G00	2	Milan SC Black G00	0	CSL Gold U13	2.06	0.97
10185	2013-10-19	Milan SC Black G00	1	Celtic Academy G00	2	CSL Gold U13	1.25	1.07
10137	2013-10-13	Eagles SC G00	2	Milan SC Black G00	0	CSL Gold U13	2.93	0.69
10003	2013-10-12	LA Premier FC G00	3	Milan SC Black G00	0	CSL Gold U13	1.77	0.77
9807	2013-10-05	Milan SC Black G00	2	California SA Cypress Black G00	1	CSL Gold U13	0.47	2.27
9603	2013-09-22	Milan SC Black G00	1	Xolos USA TEM G00	1	CSL Gold U13	0.88	1.80
9493	2013-09-21	Milan SC Black G00	1	FC Golden State G00	0	CSL Gold U13	0.97	2.06
9436	2013-09-15	Celtic Academy G00	3	Milan SC Black G00	3	CSL Gold U13	1.07	1.25
9173	2013-09-07	Milan SC Black G00	0	LA Premier FC G00	1	CSL Gold U13	0.77	1.77
8445	2013-07-21	So Cal Blues Kale G00	3	Milan SC Black G00	2	Pats Cup GU13 Mercurial U13	1.82	0.84
8401	2013-07-20	United FC Black G00	1	Milan SC Black G00	0	Pats Cup GU13 Mercurial U13	1.41	0.71
8403	2013-07-20	North Valley Empire G00	1	Milan SC Black G00	3	Pats Cup GU13 Mercurial U13	0.57	2.20